

Old Kingsbury Site Operating Safety Rules

1. The airfield is an active, private airfield where full scale aircraft have the right of way at all times.
2. All RC Pilots must have an observer (spotter) to watch for Full Scale Aircraft. Spotters do not have to be a pilot or AMA member, but must understand their responsibility to watch for full scale traffic and assist with tracking other flying models. For safety, no one will fly alone.
3. RC Pilots must land ASAP when Full Scale Aircraft are preparing to take off or land.
4. NO model aircraft flying is authorized when Full Scale activities are scheduled or in progress.
5. If any problems are experienced that may need to be reported to local authorities or to Mr. Roger Freeman at Kingsbury, one of the Board members must be contacted promptly to make them aware of the situation. It is the responsibility of designated TCF Board members, and not individual club members, to coordinate safety or other important issues with the land owners.
6. If trash barrels become full please empty them into the dumpster by the Pioneer Flight Museum (PFM) hanger.

Old Kingsbury Site Flying Safety Rules

1. The Frequency Control Board and frequency pins located in the pavilion will be used for 72 MHz or HAM frequency transmitters. Do not turn on 72 MHz or HAM frequency transmitters until the applicable frequency slot on the frequency control board has the user's current AMA card in it and you have the applicable pin on your transmitter. 2.4 GHz spread spectrum technology RC transmitters have become the dominant radio of choice. Therefore, on normal flying days, pilots who wish to operate 72 MHz or HAM frequency transmitters must coordinate with other pilots and agree on a frequency control protocol. For an RC event the applicable frequency control requirements will be set up by the Event Coordinator or Contest Director.
2. The parking and spectator area will be on the pavilion side of the steel pipe barrier fence. Spectators will be advised to remain in the parking and spectator area for their safety.
3. Engine starting or run-up is not permitted in the pit area. The pit area is defined as the first 25 feet from the metal fence towards the runway. Engine starting and run up is performed beyond the pit area. Point aircraft towards the runway for starting and run up.
4. Engine run-up in the ready area should be limited to that required during a re-start or for a safe flight. Watch your prop/jet wash.
5. The Old Kingsbury authorized flying area is illustrated in Figure 1 below and defined as follows. All R/C flying will be conducted in the area west and southwest of the dashed

Flight Line parallel to the R/C runway so as to avoid all buildings, the crosshatched “No Fly Zone” shown in Figure 1, and people in the pit and pavilion areas.

6. Take offs and landings will not be made from any area other than the model runway area.
7. DO NOT TAXI INTO THE PIT AREA. Engines will be shut off immediately when exiting the runway.
8. Up to four aircraft can be flown at the same time, under normal circumstances. Consideration should be given to new/student pilots and jet powered model aircraft.

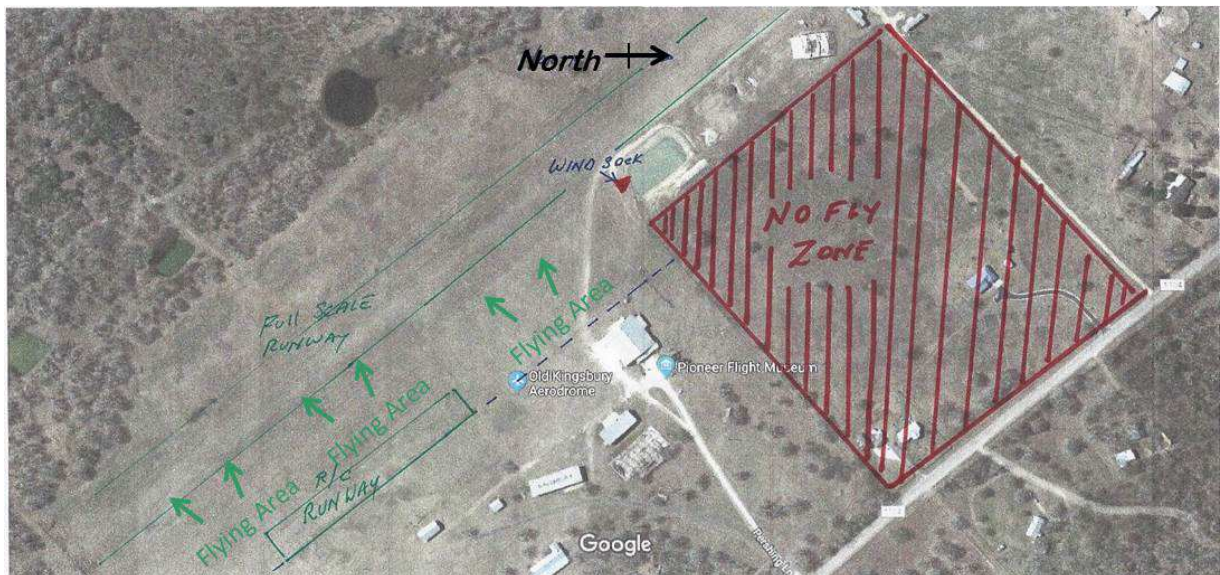


Figure 1 Old Kingsbury Authorized R/C Flying Area

EMERGENCIES

Call 911 for all emergency services. You are in Guadalupe County at the Kingsbury Aerodrome. The address is 190 Pershing Lane, Kingsbury, TX 78638 and the

GPS coordinates are 29° 38.062' N by 97° 48.660' W